

As per latest guidelines of NEP & NCF



8



Terabyte

(A Series of Computer Books)

ANSWER KEY





1 NETWORKING

Section - A :—

(A) Multiple choice questions:

1. (b) 2. (b) 3. (b) 4. (b) 5. (c) 6. (a)

(B) Fill in the blanks:

1. Audio-Visual 2. Switch 3. Similar 4. Protocol 5. Fiber 6. Short 7. Star
8. Mesh

(C) State whether following statements are T or F:

1. (T) 2. (T) 3. (F) 4. (F) 5. (F) 6. (F) 7. (T) 8. (F)

(D) Application based questions:

1. Local Area Networ (LAN) is most suitable.
2. Fibre Cables is most suitable to act as transmission media.
3. Super Beam is most suitable for this purpose.
4. Star topology is best.

(E) Answer the following:

1. Computer network is a group of computers and other computer related devices connected together to share hardware, software and data. Networking is also called computer networking.

★ Advantages of Networking :

- i) Hardware Cost Reduction :- due to sharing, less used devices like printer and scanner can be shared easily which reduces hardware cost.
 - ii) Remote Access : Networking makes it possible to access your data from any where in the world.
 - iii) Server : All the required software and data can be loaded on one powerful computer and all over computer in the network can use these.
2. Disadvantages of Networking :
 - i) Expensive : Intial set-up of networking and its maintenance is expensive.
 - ii) Hacking : Computer network is prone to hackers any shortcoming in security may allow hackers to carry away or damage the important data.
 - iii) Data Security : Due to remote access facility, it is possible that some unauthorized person may access the data.

3. Router is a device used to connect two non-similar networks. Routers are of two types; Static Routers and dynamic routers. A Router is a networking devices that for wards data packets between computer net works.
4. Features of fibre cable :
 - i) Quite costly
 - ii) Difficult to install.
 - iii) Very high data transmission rate.
 - iv) Very high band width.
 - v) Quite suitable for large distance transmission.
5. Features of LAN :
 - i) It is designed for a small area.
 - ii) It does not require special devices like modem, repeaters, etc..
 - iii) It is quite secure and provide high data transmission rate.
 - iv) It is generally owned by a single person or an organization.
 - v) It requires relatively less expensive communication media.



2

Answer Key

HTML

Class - 8

Section - A :—

(A) Multiple choice questions:

1. (a) 2. (b) 3. (a) 4. (a)

(B) Fill in the blanks:

1. Angle 2. HTML 3. not 4. two 5. < SUP > 6. Horizontal 7. <P>
8. line

(C) State whether following statements are T or F:

1. (F) 2. (T) 3. (F) 4. (T) 5. (T) 6. (T) 7. (F) 8. (T)

(D) Application based questions:

1. Yes, HTML is right choice for this purpose.
2. To make specified text as bold she should use < B > and to underline < U >.

(E) Answer the following:

1. Hyper text means that web page may contain text, sound, animation etc. and can be linked with another web page for easy and quick movement form one web page to another web page.

2. Major Features of HTML are :

- i) It is quite easy and simple to learn.
- ii) Various Commands in HTML are called tags enclosed in angle brackets.
- iii) HTML is not case sensitive i,e it considers small and capital alphabets as some.
- iv) HTML file is named with extension .htm or .html.
- v) HTML code is written using some editor such as notepad.
- vi) HTML tags are of two types.

3. Basic structure of HTML is :-

< HTML >

< HEAD >

< TITLE > title of web page < /TITLE >

< /HEAD >

< BODY >

The main content of the HTML document is written here along with the attributes which enhance the appearance of a web page.

< /BODY >

< /HTML >

4. Tags are called as various command of HTML enclosed in angle brackets. There are two types of HTML tags ; Container Tags and Empty Tags.

i) Container Tags : Is a tag that has a beginning and an end also. Beginning is indicated putting in tag < > while end is indicated by putting a / just before tag name in < > brackets.

ii) Empty Tags : is a tag that has a beginning but no end. It is indicated by putting tag in angle brackets < >.

5. i) Examples of container tags are : < CENTER > , < B > , < I > , < U > , < SUB > , < SUP > .

ii) Examples of empty tags are : < BR > , < P > , < HR > .



Answer Key

Class - 8

3 MORE ABOUT HTML

Section - A :—

(A) Multiple choice questions:

1. (b) 2. (c) 3. (c)

(B) Fill in the blanks:

1. (6)
2. < FONT >
3. < MARQUEE >
4. < OL >
5. Type and START
6. < LI >
7. < IMG >

(C) State whether following statements are T or F:

1. (F)
2. (F)
3. (T)
4. (F)
5. (T)
6. (T)
7. (T)

(D) Application based questions:

1. COLOR attribute and text .
2. In HTML we can add image by < IMG > tag to make website attractive.
3. MARQUEE Tag is used to keep the text moving.
4. ANCHOR tag <A> is used.

(E) Answer the following:

1. < H > in HTML is heading tag used to display a text as heading. < H > tag is a container tag.
2. Purpose of < FONT > tag is to specify the font type, size and color of the text included under this tag. Various attributes are FACE , SIZE and COLOR.
3. Hexadecimal codes for colors are 0 , 1 , 2 , A , B , C , D. These are the values that tell the display how much of a color to show.

For eg : # 00FFFF , # COCOCO.

- | | |
|--|---|
| 4. < OL >
i) Tag is used to number the various items in the list.
ii) < OL > is used when the list is ordered. | < UL >
i) Tag is used to put bullets Style before the various items in the list.
ii) < UL > is used when the list is unordered. |
|--|---|

5. < IMG > tag is used to insert specified picture at desired location in the web page. It has attributes SRC and ALIGN.
6. < A > tag is Anchor tag in HTML used to hyperlink the page. We can hyperlink text or images by using < A > tag in HTML.
7. Major reasons for this are :
 - i) Specified Locations image file is not correct.
 - ii) Web browser is text browser and does not support image.
 - iii) Image file is too big and make website slow.



4 LAYERS AND FILTERS IN PHOTOSHOP

Section - A :—

(A) Multiple choice questions:

1. (a) 2. (c) 3. (a) 4. (b) 5. (a)

(B) Fill in the blanks:

1. Layer palette 2. Panel Bin 3. .PSD 4. Filter gallery

(C) State whether following statements are T or F:

1. (F) 2. (F) 3. (T) 4. (T) 5. (F) 6. (T) 7. (T)

(D) Application based questions:

1. Layers in photoshop is the feature that can help her to retain the original copy.
2. Opacity is the option in photoshop that can help him.
3. Monika can use eye button to hide the layer , in photoshop.

(E) Answer the following:

1. Advantages of layers are :-

- i) Layers make sure that our original photo / image is not destroyed.
- ii) It is quite easy to add layer to work independently on a photo.
- iii) It is possible to change the opacity or apply any effect on layer individually.

2. Steps to Rename the layers :-

- i) Select the layer.
- ii) Select layer . Layer properties dialog box is displayed.
- iii) Enter desired name for the layer in the name box.
- iv) To Select the color for this layer, select suitable color using arrowhead of color box.
- v) Click on OK button to confirm the selections made.

3. Steps to hide the layer :-

- i) Select the layer that you want to hide.
- ii) Click once on the eye button. The eye photo and the layer will become invisible.

4. Opacity means how non-transparent on image is. It can be set as desired. Steps to change the opacity of layer are :-

- i) Select the layer whose opacity is to be changed.
- ii) Go to opacity option in the layer palette.

iii) Enter a value between 0 - 100 and press Enter key.

5. Filters are quite useful in changing the appearance of an image , or layer in photoshop.

Steps to apply filter using filter gallery are :-

- i) Select the layer to which you want to apply filter.
- ii) Select filter category form the filter gallery.
- iii) Select a filter type clicking on it's thumbnail icon.
- iv) If required , change the edge thickness, edge intensity in their respective boxes.
- v) Click on OK button to confirm the selections made.



5

RESIZING THE IMAGE

Answer Key

Class - 8

Section - A :—

(A) Multiple choice questions:

1. (a) 2. (a) 3. (a) 4. (a)

(B) Fill in the blanks:

1. Size 2. Filter 3. Duplicate 4. Smudge 5. Spot healing brush
6. Shadow/highlights

(C) State whether following statements are T or F:

1. (T) 2. (F) 3. (T) 4. (T) 5. (T) 6. (F)

(D) Application based questions:

1. Red eye tool can help him to replace the red color with natural color of eye retina.
2. Smudge tool can help Madhav to remove these wrinkles in photo.
3. Adjustments option under image menu can help him to adjust the color combination in the photo.

(E) Answer the following:

1. Resizing the image means to change the size of the image. Photoshop provide facility to resize the image & keeping the high quality of the image.

★ Steps to resize the image are :-

- i) Select the image that is to be resized.
- ii) To see the dimensions of the image, click ruler option in view menu.
- iii) Select image size option in image menu. Dialog box is displayed.
- iv) To increase the size of the image , select Bicubic option using drop down arrow in resample image check box.

- v) Specify the width and height respectively in width and height boxes.
 - vi) Click on OK button to confirm the selections made.
2. Steps to sharpen a photo.
- i) Open the image that is to be sharpened.
 - ii) Set the image zoom to 100 using zoom tool in option bar.
 - iii) Select filter → sharpen → unsharp mask. A dialog box is displayed.
 - iv) Enter suitable values in amount, Radius & Threshold boxes.
 - v) Click on OK button to confirm the selections made.
3. Steps to add softness to image :
- i) Open the image that is to be softened.
 - ii) Select layer → Duplicate → layer to create a duplicate copy of the image.
 - iii) Assign a name to the duplicate layer by specifying name in As box.
 - iv) Select filter → Blur → Gaussian blur. A dialog box is appeared.
 - v) Enter the value in Radius box.
 - vi) Keeping the background copy layer selected, change its opacity to 50%, image will be displayed in soft glowing effect.
4. Yes, it is possible to make a dark image to bright, perform the following steps.
- i) Open the image that is to be improved.
 - ii) Select layer Duplicate layer to create a duplicate copy of the image.
 - iii) Duplicate layer dialog box is displayed.
 - iv) Assign a name to the duplicate layer by specifying name in As box.
 - v) Select screen option using drop down arrow available in blending mode in layers panel.
5. Yes, it is possible to remove the redness of the eye retina in the photo to natural eye color with the help of Red eye tool we can. Follow the steps to perform this :-
- i) Select the image that has eyes with red color.
 - ii) Using Zoom option, enlarge the eyes area.
 - iii) Click and hold spot healing brush tool. A list of tools is displayed.
 - iv) Select Red eye tool from the list.
 - v) In the option bar, set the pupil size to 10% and darken amount to 10%.
 - vi) Click on the red area of eye. The red color is replaced with the natural color of the eye.



6

MORE ON FLOWCHARTS

Section - A :—

(A) Multiple choice questions:

- 1. (d) 2. (b) 3. (d)

(B) Fill in the blanks:

- 1. Initial, final 2. Diamond

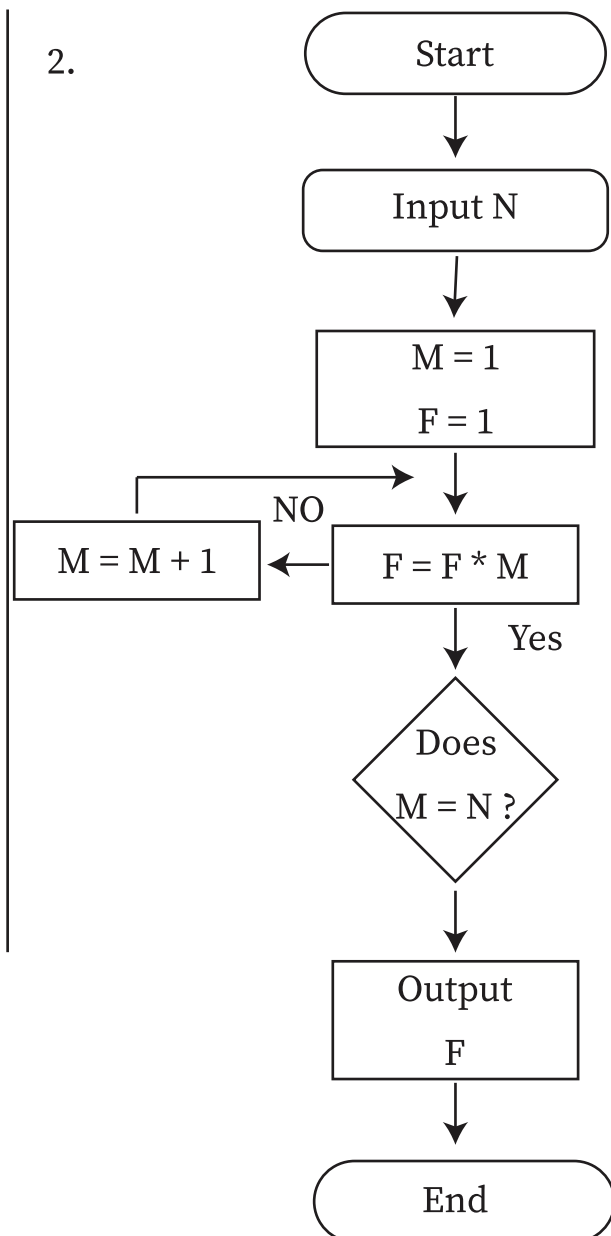
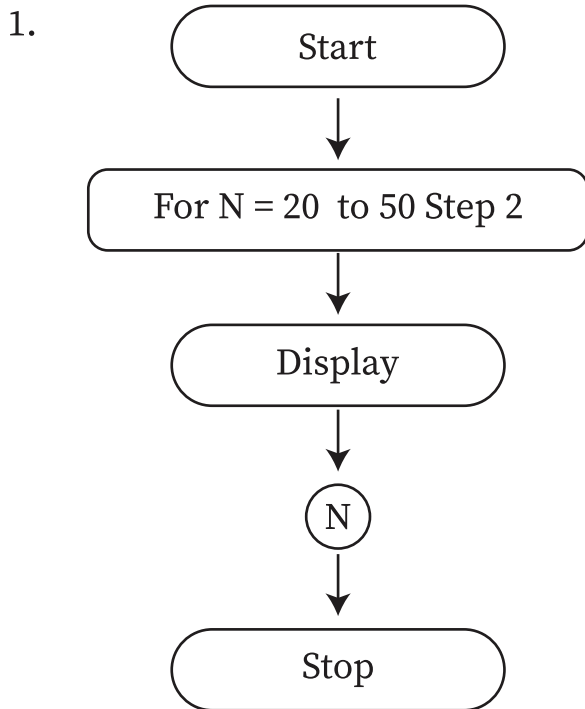
(C) State whether following statements are T or F:

- 1. (T) 2. (T) 3. (F)

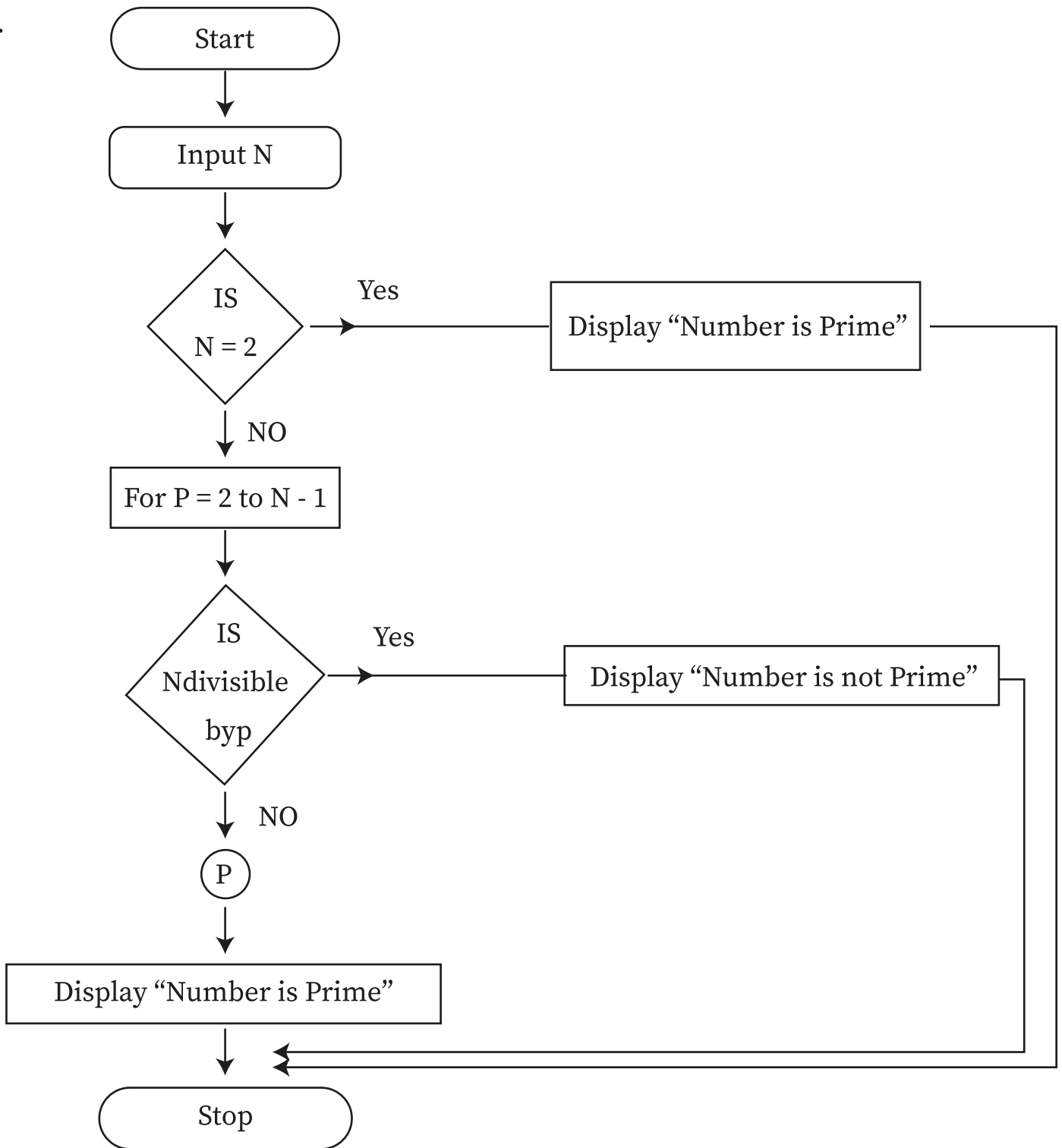
(D) Application based questions:

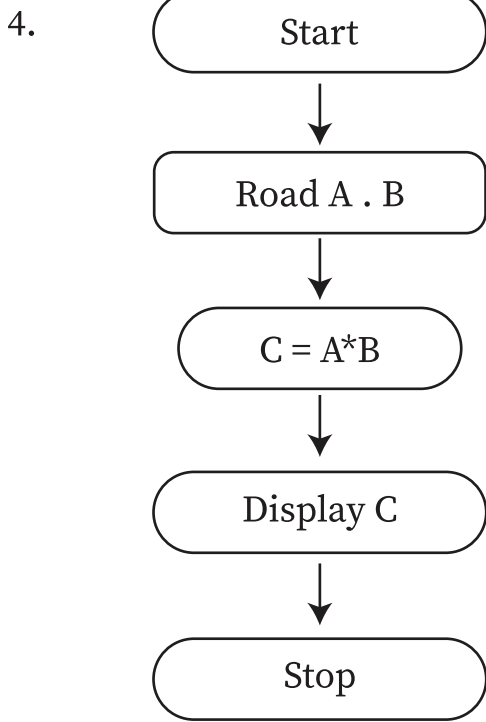
- 1. Do it yourself.
- 2. Decision symbol can help him to select that one set.

(E) Answer the following:



3.





Answer Key

Class - 8

7 ITERATIVE STATEMENTS IN PYTHON

Section - A :—

(A) Fill in the blanks:

1. Iterative 2. Repetitive 3. .While

(B) State whether following statements are T or F:

1. (T) 2. (T) 3. (F) 4. (T)

(C) Answer the following:

- Iterative statements are the statements that keep repeating themselves as long as a given condition remains true. These statements are also known as repetitive statements or loop statements.
- While statements is an interative statements. It is used when we do not know the repetition number but know the final value of control variable.
- Purpose of loop is used to repeat a specific block of code a known number of times.
- Break statements is used to terminate the loop. On occurrence of this statement, loop terminates and control of the program is transfered to the statements immediately after the body of the loop.
- Continue statements is used to skip the remaining body of loop for the current iteration or current value of the control variable. Unlike break statement, loop is not

terminated and continues with the next iteration.

6. # Program to display even number from 1 to 100 .

```
int main ( )
{
    int number = 1
    while (number <= 100)
    {
        if (number % 2) == 0)
        {
            print ( “ % d/n” , number);
            {
                number ++ ;
            }
        }
        return 0,
    {

```

7. # Program to display all even number up to 10 n = 1

```
While ( n <= 10):
    print ( n )
    n = n + 2
```

8. # Program to display table of 5.

```
n = int (input ( “ 5 ” ))
t = 5*10
k = 5
while (k <= t):
    print ( k )
    K = k + n
```

9. # Program to display product of first n natural numbers.

```
int n, sum;
print (“Enter the value of n”);
scanf ( “ % d” , &n );
sum = (n* (n + 1))/2;
print ( “the sum of n number is % d ” , Sum);
return 0;
```



8 CYBER SECURITY

Section - A :—

(A) Multiple choice questions:

1. (d) 2. (d) 3. (c)

(B) Fill in the blanks:

1. Cyber Security 2. Confidentiality Integrity and Availability 3. Integrity
4. Spyware 5. Ransomware

(C) State whether following statements are T or F:

1. (T) 2. (F) 3. (T) 4. (T) 5. (T)

(D) Application based questions:

1. Cyber security is a set of rules and practices designed to protect internet - connected system network , applications and data from malicious attacks.
2. Basic goals of cyber security are to protect computer system , network and information from unauthorized access , disclosure , disruption and modification confidentiality , integrity and availability are major goals.
3. Spyware is a software that secretly record information about user activities on his/her computer.
4. Ransomware is a software that encrypts user's files and data on a device making them unusable.
5. Phishing is a type of cyber crime in which a message. Seems to come from a genuine organization or friend but a click on the link will redirect user to fraud websites asking to provide sensitive data.
6. MITM attack is a type of cyber threat in which a cyber criminal intercepts a conversation or data transfer between two individuals.
7. Four advantages of cyber security are :-
 - i) Protection against cyber threats :- Cyber security helps to protect computer systems, networks and data from wide a range of cyber threats and attacks.
 - ii) Business Continuity :- By Protecting critical systems and infrastructure , cyber security plays a crucial role in maintaining business continuity.
 - iii) Cost Saving : Cyber Security implementation involves upfront costs , but it can lead to long - term. Cost savings

iv) Competitive Advantage : Organizations giving priority to cyber security get competitive advantage.

7. Four cyber security tips are :

- i) Use Strong and unique passwords.
- ii) Keep software and systems updated.
- iii) Be cautious with email.
- iv) Use secure wi-fi networks.



Answer Key

Class - 8

9 CLOUD COMPUTING

Section - A :—

(A) Multiple choice questions:

1. (d) 2. (b) 3. (b)

(B) Fill in the blanks:

1. Public, private 2. Cloud 3. Cloud computing 4. Deployment models and service models 5. Deployment

(C) State whether following statements are T or F:

1. (F) 2. (T) 3. (F) 4. (T)

(D) Application based questions:

1. Infrastructure - as - a - service (IaaS) model of cloud computing can provide these.
2. Private Cloud is a type of model which can serve his purpose.
3. Yes, cloud computing allow this.

(E) Answer the following:

1. Cloud computing refers to the manipulation, configuration and access of hardware/software resources remotely. It offers online data storage, infrastructure and application.
2. Four types of Deployment Models are :-
 - i) Public cloud :- It is a type of cloud that is open to general public i.e it allow systems and services to be easily accessible to the general public.
 - ii) Private cloud :- Is confined to the specified organization only. It allows system and services to be accessible to that organization only.
 - iii) Community cloud is confirmed to a group of organizations only in this type of

cloud, computing resources are governed, owned and operated by a group of organizations.

iv) Hybrid Cloud : it is a mixture of public and private cloud. In this cloud critical activities are performed using private cloud while the non - critical activities are performed using public cloud.

3. Infrastructure - as - a - service (IaaS) is the most basic service model. It offers access to computing resources in a virtualized environment. We can access and manage virtual machines (VMs), storage , networks and other fundamental computing resources.

4. PaaS	SaaS
i) It stands for Platform - as - a Service.	It stands for Software - as - a - Service.
ii) It is widely used by developers.	It is commonly used by end - users.
iii) It is a cloud computing model that delivers the essentials and tools used in developing software.	It is a cloud computing model that hosts software and make it available for clients.
iv) For eg :- Google App Engine.	For eg :- Microsoft 365.

5. Advantages of cloud computing are :-

- i) Cost Savings :- It eliminates installation cost in hardware and infrastructure.
- ii) Security :- It provides invest heavily in security measures , employ dedicated terms to ensure the protection of user data and implement advanced security.
- iii) Maintenance and updates : Cloud providers handle the maintenance and updates of the underlying infrastructure , including hardware , software and security patches.

6. Disadvantages of cloud computing are :-

- i) Dependence on Internet Connectivity.
- ii) Security Concerns
- iii) Limited Control
- iv) Lock - In
- v) Compliance and Legal Considerations

7. Characteristics of cloud are :-

- i) On demand service :- Cloud computing allows the users to use web services and resources on demand.

- ii) Pooling : cloud computing allows multiple users to share a pool of resources.
- iii) Control : It provides control and maintains all the aspects of cloud services.



10 E - COMMERCE

Section - A :—

(A) Multiple choice questions:

1. (b) 2. (d) 3. (c) 4. (a) 5. (c)

(B) Fill in the blanks:

1. August 11, 1994 2. Crowd funding 3. Business to consumer 4. Shopping online
5. Cash on delivery

(C) State whether following statements are T or F:

1. (T) 2. (F) 3. (F) 4. (T) 5. (T)

(D) Application based questions:

1. Consumer - to - Business (C2B) is used in this process.
2. Crowd Funding
3. Drop Shipping

(E) Answer the following:

1. Business - to - Consumer is B2C. It is a business model where businesses sell products or services directly to individual consumers. It's focus is on providing a seamless online shopping experience to the end consumers.
2. C2C stands for Consumer - to - Consumer. It is a business model where individuals sell products or services directly to other individuals.
For eg. E Bay.
3. G2B is Government - to - Business. It is a business model where government entities provide products or services to business. It also include various government service offered online , such as; Issuing Driving License.
4. Drop Shipping is a sale of a product , which is manufactured and shipped to the consumer by a third party.
5. Subscription is recurring purchase of a product or service on a regular basis until the subscriber chooses to cancel.

Sample Paper - 1

(A) Choose the right answer :

1. (c)
2. (d)
3. (c)
4. (c)
5. (b)

(B) Fill in the blanks:

1. Transmission Media
2. Hyper Text Markup Language
3. MARQUEE
4. Opacity
5. Smudge

(C) State whether following statements are T or F:

1. (F)
2. (T)
3. (F)
4. (F)
5. (T)

(D) Answer the following:

1. a) Transmission Media is a path or medium by which message travels from sender cable to receiver in the network. It is also known communication media or transmission channels or communication channel.
b) Repeater :- is a device that recievers the signal before it becomes too weak and creates it's copy bit by bit at the original strength.
2. a) LAN :- Stands for Local Area Network. It is an interconnection of computers and other resources confined within a small geographical area ; generally upto 10 kilometers.
b) Ring Topology :- In this topology , each mode is attached to its nearly in such a manner that entire appears in the form of a ring. This network can be unidirectional or bi - directional.
3. HTML Stands for hyper text markup language HTML is one of the most suitable languages to design attractive websites. With the help of HTML we can design web pages that may contain text , sound , animation and can also link with another web page for easy and quick movement form one page to another web page.

* Features of HTML are :-

- i) It is quite simple and easy to learn.
- ii) HTML commands are called tags. These are enclosed in angle brackets.
- iii) HTML is not case sensitive.
- iv) HTML code is written using some editor such as Notepad.

- v) HTML file is named with extension .htm or .html.
4. a) <BODY> :- it is a container tag. All the text and other tags such as <HTML>, <HEAD>, <TITLE> of the document are included in between <BODY> and </BODY> tags.
- b) <SUP> :- it is used to put the specified text as superscript.
- c) <HR> :- it is used to draw horizontal line. To specify width and length, this tag has two attributes <WIDTH> and <SIZE> respectively.
5. a) <H> :- tag is used to display specified text as heading. An integer number between 1 and 6 is associated with the <H> tag to specify the level <SIZE> of heading.
- b) :- tag is used to insert specified picture at desired location in the webpage. It has attributes SRC and ALIGN respectively to specify the location of image file and alignment of the image.
- c) <HREF> :- this tag stands for Hypertext Reference. It specifies the URL of the page the link goes to.
- | | | |
|--|--|--|
| <p>6. i) This tag is used to number the various items in the list.</p> <p>ii) It defines the ordered list.</p> | | <p style="text-align: center;"></p> <p style="text-align: center;"></p> <p>This tag is used to put bullets style before the various items in the list. It defines an unordered list.</p> |
|--|--|--|
7. Major advantages of layers are :-
- i) Layers make sure that our original photo/image is not destroyed.
- ii) It is quite easy to add layer to work independently on a photo.
- iii) It is possible to change the opacity or apply any effects on layers individually.
8. Steps to apply filter in photoshop are :-
- i) Select filter → Filter gallery from the menu bar.
- ii) Use buttons or percentags button to resize the view of the image.
9. Steps to add flash effect :-
- i) Open the image that is to be improved.
- ii) Select layer → Duplicate layer to create a duplicate copy of the image.
- iii) Assign a name to the duplicate layer by specifying name in AS box.
- iv) Select screen option using drop down arrow available in blending mode in layers panel entire image is lightened.
- v) Keep duplicating the new layer, till the desired effect is achieved.
10. Yes, it is possible to remove wrinkles in photo.
- i) Select the image that is to be improved.
- ii) Zoom the image to enlarge the area from which wrinkles, dust are to be removed.

- iii) Click and hold Blur tool, List of tool is displayed. Select smudge tool option from the list.
- iv) Select the brush Size in the option bar.
- v) Move Smudge to clear the wrinkles in the image.

Sample Paper - 2

(A) Choose the right answer :

1. (c) 2. (a) 3. (b) 4. (c) 5. (c)

(B) Fill in the blanks:

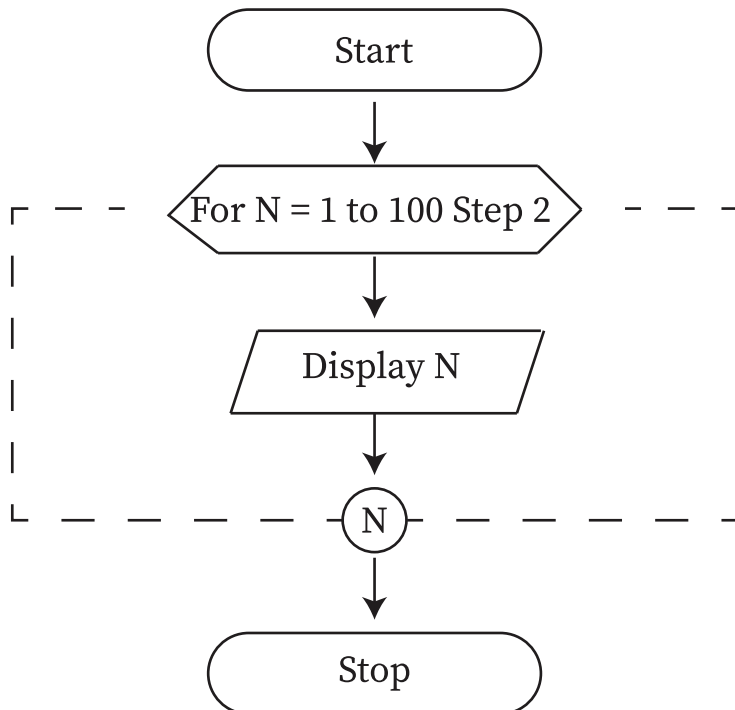
- 1. Diamond
- 2. Repetitive and Loop
- 3. Spyware
- 4. Public
- 5. Drop Shipping

(C) State whether following statements are T or F:

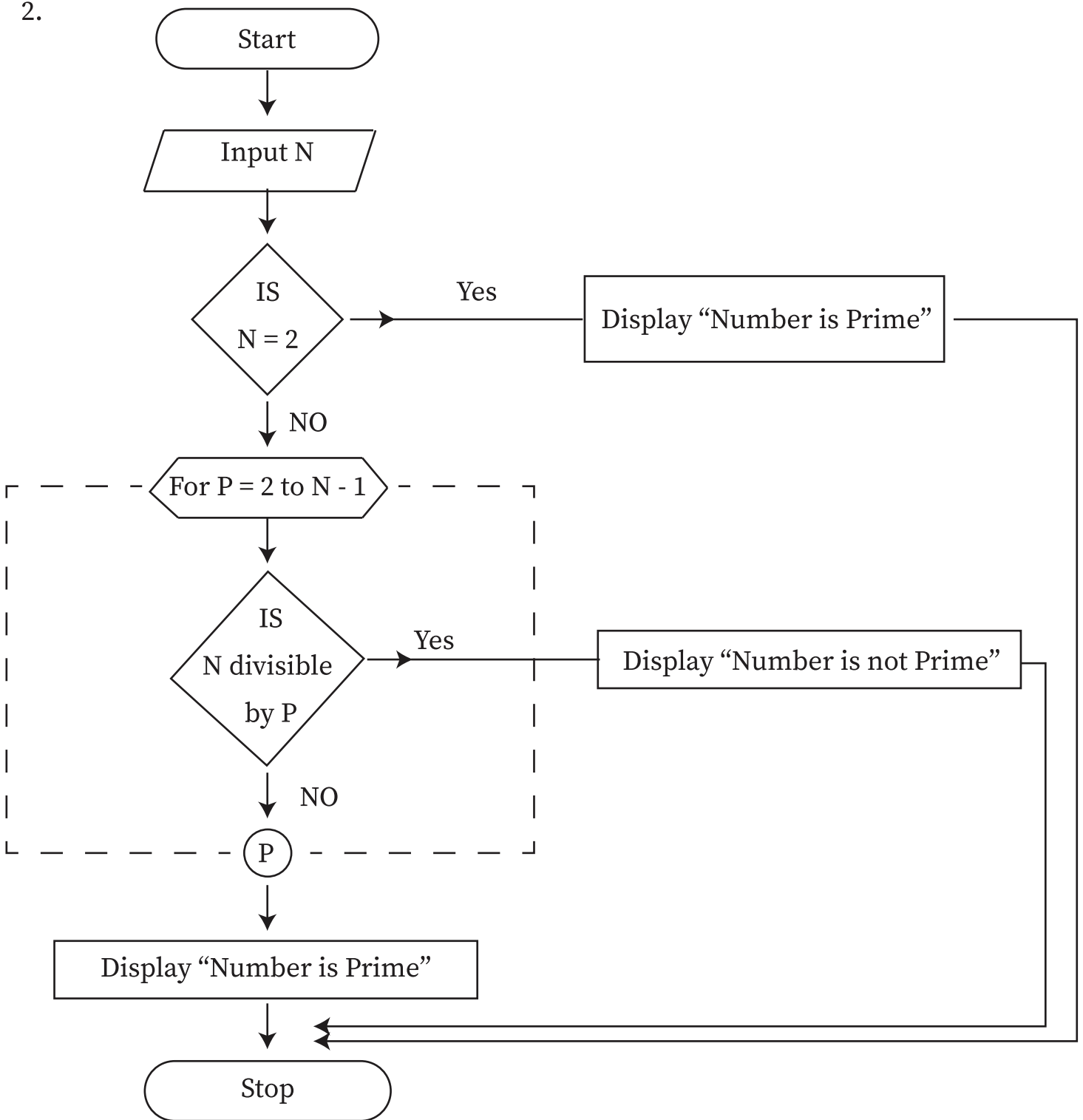
1. (T) 2. (T) 3. (F) 4. (F) 5. (T)

(D) Answer the following:

1.



2.



3. Purpose of while Statement , it is an iterative statement. It is quite suitable where we do not know the repetition number rather we know the final value of control variable.

General of while statement :-

Intialization

while <Condition>

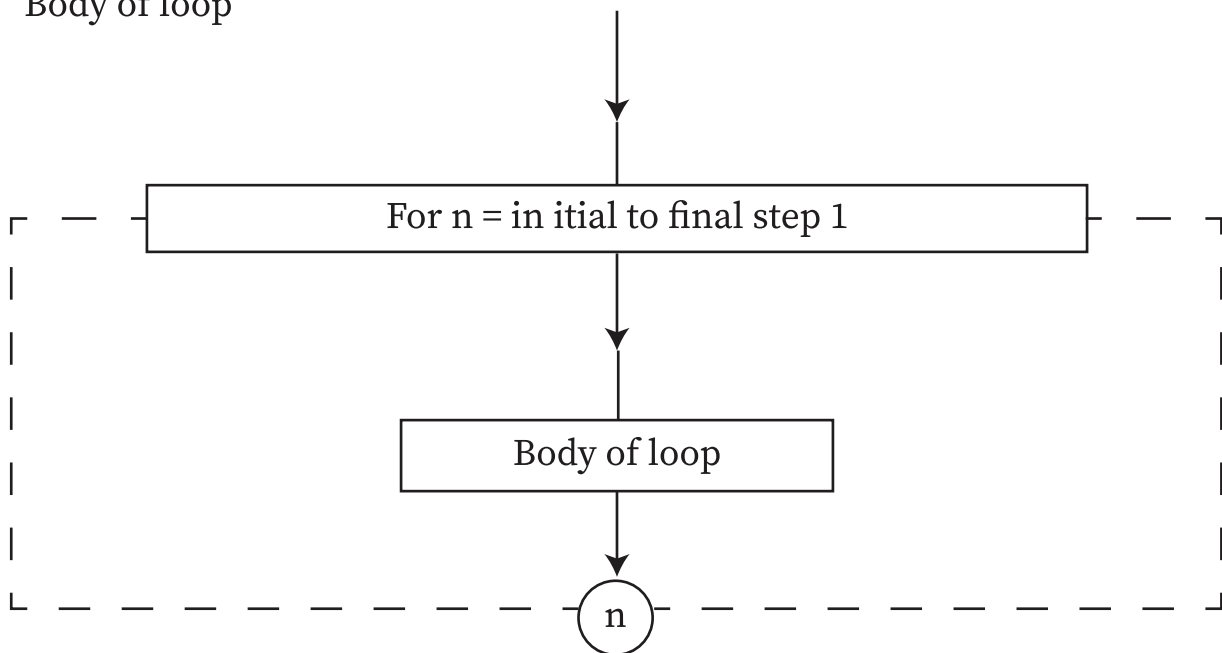
Body of loop

Step value

4. For statement is quite suitable where we know how many times repetition should occur. General form of for statement :-

For <Variable> in <Sequence>

Body of loop



5. a) Ransomware :- it's a software that encrypts user's files and data on a device making them unusable.
- b) Worms :- it is software that spreads copies of itself form device to device without human instructions.
6. Advantages of cyber security are :-
- Protection against cyber threats :- it helps to protect computer systems & networks from a wide rage of cyber threats and attacks such as malware , ransomware.
 - Business continuity :- By protecting critical systems and infrastructure, cyber security plays a crucial role in manitaining business continuity.
 - Cost savings :- it implementation invloves upfront costs but it can lead to long - term cost saving.
 - Enhanced Produtivity :- A secure and protected IT environment allows. Employees to work without interruptions caused by cyber threat.
 - Competitiue Advantage :- Organizations giving priority to cyber security get competitive advantage.
7. a) Hybrid Cloud :- it is a mixture of public and private cloud. In the cloud critical activities are performed using private cloud while the non - critical activities are performed using public cloud.

b) Platform - as - a - Service :- it provides a platform and environment for developers to build , depoy and manage applications without the need to worry about the underlying infra-structure for eg. Google App Engine.

8. Advantages of cyber Security :-

- i) Trust and Reputation :- Strong cyber security builders trust and enhance the reputation of organizations.
- ii) Business Continuity :- by protecting critical systems and infrastructure , cyber security plays a crucial role in maintaining business continuity.
- iii) Safe guarding Sensitive Data :- Cyber Security helps to sofeeguard sensitive and confidential information by applying encryption techniques , access controls and data loss prevention measures.

* Disadvantage of cyber Security :-

- i) False sense of Security :- Cyber security measures are good , but fully relying on them may prove a false sense of security.
- ii) Privacy concerns :- Strict cyber security measure may raise privacy concerns.
- iii) Insider threats :- leads to significant risk. Malicious insiders or employees can bypass security measures to cause significiant harm to organization's system and data.

9.	B2B	C2B
i)	It is business to business.	It is consumer to business.
ii)	It is a model where business sells a good or service to another business.	It is a model where a consumer sells his own product or service to some business or organizations.
iii)	For eg. A business sells software as a service for other business to use.	For eg. A photographer licenses his photo for a business to use.

10. Advantages of E - commerce are :-

- i) Global Reach :- E - commerce enables business to reach a global customer base without the limitations of geographical boundaries.
- ii) Efficient Marketing and Advertising :- E - Commerce platforms use a range of digital marketing tools and techinues such as search engine optimization Social media markting , email maketing to reach target audience effectively.

iii) Return Facility :- Almost all E - commerce companies provide facility to return the product if customer is not satisfied.

NATIONAL CYBER OLYMPIAD

- | | |
|------------------|---------|
| 1. (c) | 16. (b) |
| 2. (b) | 17. (d) |
| 3. (c) | 18. (c) |
| 4. (c) | 19. (c) |
| 5. (b) | 20. (b) |
| 6. (d) | 21. (a) |
| 7. (a) | 22. (d) |
| 8. (a) | 23. (c) |
| 9. X : C , Y : C | 24. (b) |
| 10. (d) | 25. (d) |
| 11. (d) | 26. (a) |
| 12. (a) | 27. (d) |
| 13. (b) | 28. (a) |
| 14. (c) | 29. (a) |
| 15. (d) | 30. (d) |
| | 31. (d) |